

TA-3

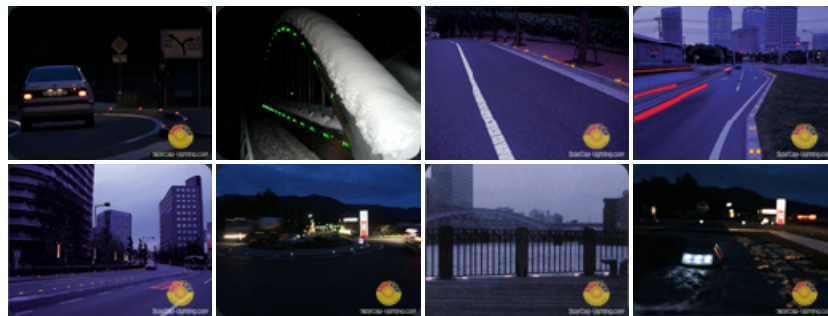
[< Back to Products](#)

YH-YS - Traffic & Commercial Application



Applications

- Perfect solution to mark median, turns and curves of roads.
- Pavements shoulders, center dividers, edge indicators, etc.



Features

Free electricity	Converts sunlight into clean electricity	No contaminating materials	All materials recyclable
Easy installation anywhere	Sunlight rain or shade Horizontal or vertical placement	Better quality light output	Minimum ultraviolet (UV) and infrared (IR) radiation
Automatic on/off	"Set and forget"	Durable	No filament to break Water-proof structure
Semi-permanent life	Unlimited charge/discharge cycle No degradation of energy storage or performance	Reduced energy consumption	Especially when colored light is needed
Wide operating temperature	-140°f ~167°f (-40°C ~ 75°C)	Single or double sided illumination configuration	Perfect for lighting narrow double passageways and paths
No electric leakage	Feature of ultracapacitors	High Visibility under worst weather conditions	Actual range is dependant on type, intensity, as well as LED lens color
Intrinsically safe	Low voltage	Aluminium alloy casing	Designed for durability

Specifications

Dimensions

Size	110 × 90 × 32mm
Weight	375g
Flash Rate	4Hz
Compression Strength	300kg/cm (Not suitable for motor cars)
View Distance	>500m
Operating Time	>14 hours
Turn Off/On Time	60+/-10/min (Flashing type only)
Charging Time	3(Sunny) to 8 (Overcast and rainy) hours
Operating Temperature	-13°F ~ 140°F (-25°C ~ 60°C)
Onset Point	150 - 370 Lux

Physical Properties

Top Cover	Poly Carbonate
Front Cover	Poly Carbonate
Bracket	A.B.S
Circuit	Special Circuit (P.C.B)
Sealing	Silicone
Body	Aluminium

Functional Specifications

Lighting

Operations

Lumination Technology	Φ10 LED × 6EA
On / Off Level	150Lux / 370Lux
Life Time	More than 10 years
Warranty Period	2 year
Available Standard Flash Patterns	One Side/Two Side (Steady, Flashing)

Energy Storage

Type	Pseudocap
Normal Voltage	2.3V
Capacity	120Fx1EA

Solar Energy

Type	Monocrystalline panel
Maximum Output Power	298mW
Current	85mA
Voltage	3.5v

Environmental and Electrical

Temperature Range	-13°F ~ 140°F (-25°C to +60°C)
Waterproof	IP 67

Properties

Model	Type	Color	Luminance (Lux)		
			Average	Min	Max
YH-YS1	Steady	Red	20.7	13.5	27.8
		Green	73.3	50.4	96.2
		Blue	54.8	51.3	58.3
		Yellow	36.1	10.8	61.4
		White	52.9	48.3	57.5
	Flashing	Red	41.7	36.2	47.2
		Green	28.2	24.8	31.6
		Blue	22.1	20.8	23.3
		Yellow	49.2	45.6	52.7
		White	26.8	25.1	28.5
YH-YS2	Steady	Red	7.8	6.7	8.8
		Green	29.3	25.6	33.0
		Blue	42.5	32.6	52.3
		Yellow	7.6	4.3	10.9
		White	46.4	28.9	63.9
	Flashing	Red	32.4	22.9	41.9
		Green	40.8	33.6	47.9
		Blue	32.2	31.5	32.9
		Yellow	46.2	40.3	52.0
		White	34.1	32.2	35.9

- Luminance (cd/m²) measurement: The luminance of 9 points on the lighting area, measured and averaged.
- Illuminance (lm/m²) is obtained by multiplying 3.14 to brightness.
- Uniformity is obtained by dividing minimum luminance by maximum luminance from 9 point measurement.

Quality Control

- Manufactured Under: ISO 9001

Drawing Data

